

Portable Indoor Air Quality Monitor

Providing the latest in Monitoring & Data Logging for IAQ testing in Buildings, Hospitals, Schools, Labs, Clean Rooms, Airports, & more

- Multiple Parameters - Up to 11 (Customize UP to 7 Gases)
- REAL-TIME Continuous Data-Logging
- PC Software & USB Included
- Large Internal Memory
- Li-Ion Rechargeable Battery
- Easy to Use Menu System
- Optional Wireless Printer
- Portable w/ Swivel Handle
- Barometric Air Pressure
- Dual Temp TcK Inputs
- Optional Handheld Probe
- Active Internal Sampling Pump



CO₂

CO

% RH

Temp

Barometric Pressure

VOC

Formaldehyde

NO₂

NO

O₃

O₂

H₂S

SO₂

“Built with Quality in Mind”



Real-time Data Logging for Graphs, Data Review, IAQ reports

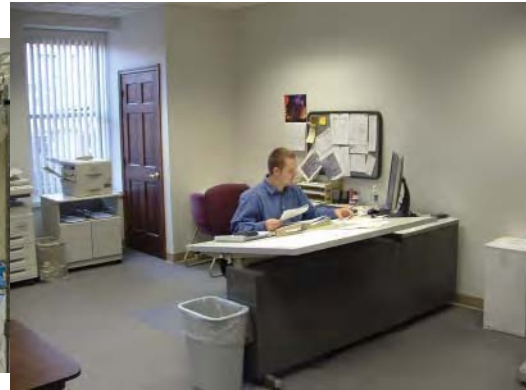
Wireless Communications with Computer & Remote Printer

Light Weight, Durable, and Easy to Transport Design

AQ EXPERT



Applications



CO₂, CO, % RH, Temp, VOC, O₂, NO, NO₂, O₃, CH₂O, SO₂, H₂S, Barometric Pressure

Features

Custom to Your Application

Up to 11 different parameters and gases to meet the needs of most air quality analysis

REAL-TIME Data Logging

Save and graph using USB or wireless Bluetooth to a PC

VOC

CO₂



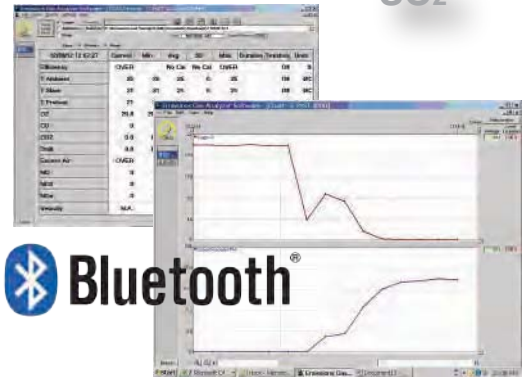
NO₂

O₃

NO

CH₂O

SO₂



AQ Gas[®] Real-time Datalogging Software

Easy Calibration

Built-in menu driven calibration procedure

Made in USA

Designed and manufactured in the USA



O₂

H₂S

% RH

CO

E Instruments International

www.E-Inst.com

P: 215-750-1212 F: 215-750-1399 A: 402 Middletown Blvd, Ste 216 Langhorne, PA 19047

Specifications

Parameter	Sensor	Range	Res.	Accuracy
CO ₂	NDIR	0 - 5,000 ppm	1 ppm	±2% rdg. ±10 ppm
CO ₂	NDIR	0 - 20%	0.1%	±3% rdg.
*CO	Electrochemical	0 - 200 ppm	0.1 ppm	±1 ppm rdg. ±0.2 ppm
% RH	Thin Film Capacitive	5 - 95% RH	0.1% RH	±2% RH
Ambient Temperature	Pt100	-40 - 257°F (-40 - 125°C)	0.1°C/F	± 2°F (32-140°F) (± 0.4°C [0-60°C])
VOCs	PID	0 - 20 ppm (0 - 46 mg/m ³)	1 ppb (2.3 µg/m ³)	10 % rdg. ± 20 ppb
VOCs	PID	0 - 200 ppm (0 - 460 mg/m ³)	10 ppb (23 µg/m ³)	10 % rdg. ± 50 ppb
O ₂	Electrochemical	0 - 25%	0.1%	±0.1% vol
Ozone (O ₃)	Electrochemical	0 - 5 ppm	1 ppb	
H ₂ S	Electrochemical	0 - 100 ppm	1 ppm	± 4% of rdg. ± 0.5% ppm
**CH ₂ O	Electrochemical	0 - 2 ppm	10 ppb	2% rdg. ± 30 ppb
*NO	Electrochemical	0 - 250 ppm	0.1 ppm	±2 ppm of rdg.
*NO ₂	Electrochemical	0 - 20 ppm	0.1 ppm	±0.5 ppm of rdg.
*SO ₂	Electrochemical	0 - 20 ppm	0.1 ppm	±0.5 ppm of rdg.
Barometric Pressure	Solid State	260 - 1260 mbar	1 mbar	±2 mbar
Differential Pressure	Bridge	±40.0 inH ₂ O (±100 mbar)	0.1 inH ₂ O (0.25 mbar)	±1% rdg.
Temperature Type K T1 & T2	Tc K	0 - 2000°F (0 - 1100°C)	1°C/F	5°F (3°C) or 2% of rdg.
Air Velocity	Calculated	0 - 300 ft/sec	1 ft/sec	
Electromagnetic compatibility	EN 61326-1, Portable Equipment			

* Other Ranges are Available Upon Request

** Accuracy Based on Laboratory Conditions

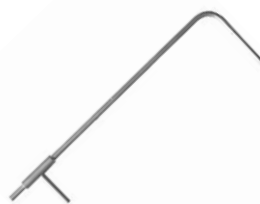
Accessories



Wireless Bluetooth Printer



AQ Expert Probe



Air Velocity w/ Pitot Tube



AQ Expert Case

AQ EXPERT ORDERING CODE

Part Number: **EXPERT-**____-____-____-____-____

(Example: EXPERT-1-C-V1 = CO₂ (0-5000 ppm), Temp, RH, Barometric Pressure, CO (0-20 ppm), VOC (0-20 ppm))

AQ EXPERT Base Unit Including:

- CO₂, Temp, RH (choice of one (1) of the CO₂ sensor ranges below)
- Barometric Pressure, Wet Bulb & Dew Point
- Continuous Internal Sampling Pump
- REAL-TIME data logging
- PC Software (with USB Cable)
- Internal Bluetooth & External Dongle
- Dual-channel TcK (Diff. Temp)
- Differential Pressure
- Operating Manual
- Swivel Handle for Easy Transport
- Li-Ion Battery & AC Charger
- Factory Calibration Certificate



ADD UP TO 6 (SIX) ADDITIONAL SENSORS FROM THE LIST BELOW:

PART NUMBER	DESCRIPTION
Expert-1	AQ Expert Base Unit w/ CO ₂ Range: 0-5000 ppm
Expert-2	AQ Expert Base Unit w/ CO ₂ Range: 0-20% ppm
*-C	CO Sensor (0-200 ppm)
-V1	VOC Sensor (0-20 ppm)
-V2	VOC Sensor (0-200 ppm)
*-N	NO ₂ Sensor (0-20 ppm)
-Z	O ₃ Sensor (0-5 ppm)
-H	H ₂ S Sensor (0-100 ppm)
-O	O ₂ Sensor (0-25%)
*-S	SO ₂ Sensor (0-20 ppm)
*-X	NO Sensor (0-250 ppm)
-F	CH ₂ O Sensor (0-2000 ppb)

* Other Ranges are Available Upon Request

* Note: All 3 O₃, NO₂, & SO₂ Sensors Cannot Concurrently be Installed on one Instrument

OPTIONAL ACCESSORIES:

PART NUMBER	DESCRIPTION
E858140	Protective Carrying Case
E85AACSF13	12" Probe, 10' Dual Hose
E852110	Bluetooth Wireless Printer
BB610032	12" Pitot Tube (Gas Velocity)
AACKP01	Differential Pressure Kit

